

SHELBY News

A Shelby Electric Cooperative publication • www.shelbyelectric.coop

AMPLIFY

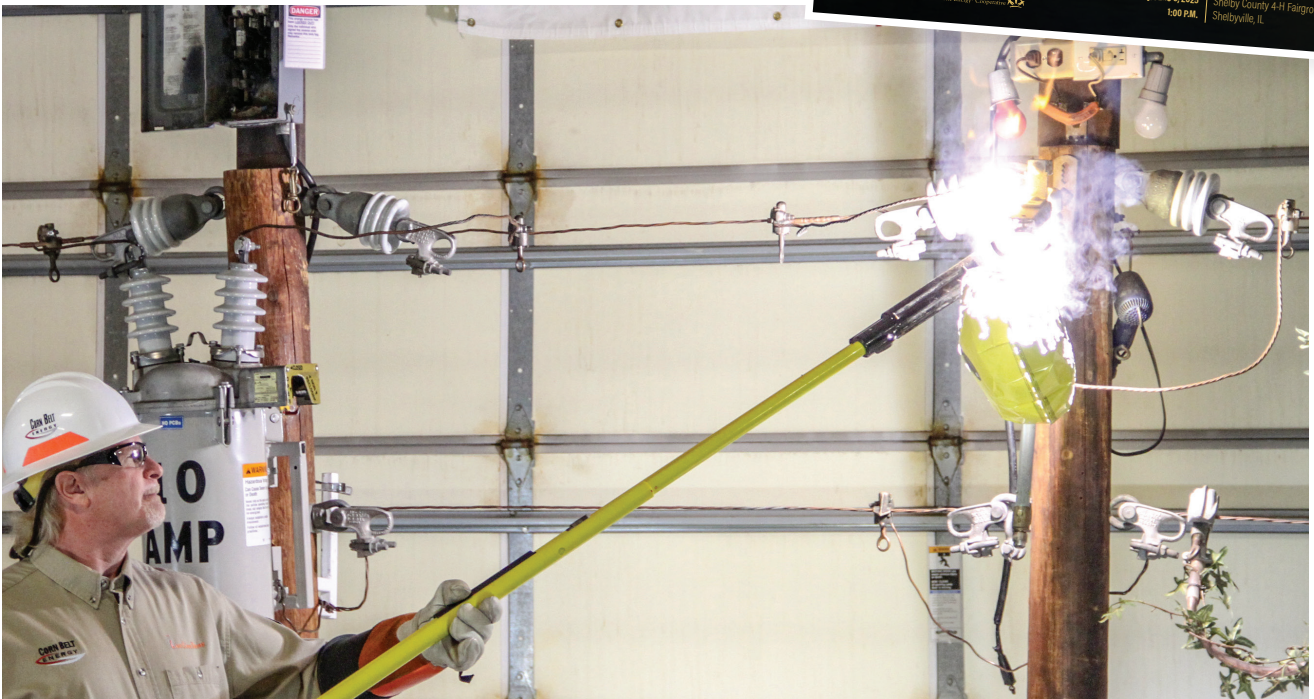
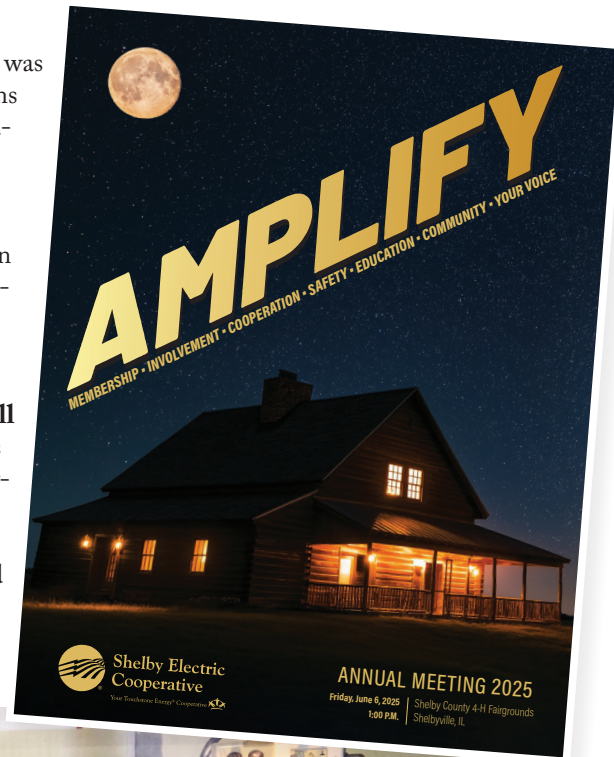


The cooperative annual meeting notice was mailed out in mid-May, and it contains information about the cooperative, registration information, and the meeting agenda.

As a consumer-member, you have a vote and a financial stake in the cooperative, so plan to attend this year's annual meeting on **Friday, June 6**. We will once again be holding an in-person business meeting with a sit-down meal. Registration will begin at **10:30 a.m.**, and each registered member will receive an attendance prize of a **\$15 bill credit**. The Shelby County Pork Producers

will be serving a barbecue pork chop dinner starting at **10:30 a.m.** and serving until **12:45 p.m.** The business meeting will begin at **1:00 p.m.** in the Shelby County 4-H Center.

The festivities will be held on the Shelby County 4-H Fairgrounds located behind the Cooperative office in Shelbyville. If you did not receive your annual meeting notice or misplaced it, you can stop by the office and pick one up or download it from the cooperative's website, shelbyelectric.coop.



Plan to attend the Live Live Safety Demo that will be presented by safety expert Steve Hancock. The demonstration will teach you about electricity and how to stay safe around electrical equipment. He will be performing several sessions, starting at **10:00 a.m.** in the 4-H Show Arena.

Live Line Demo, Inc.

Employee News

The cooperative recently hired Noah Trimble as a Broadband Technician with PWR-net. He has worked the past three years as a Heavy Equipment Operator for Metro Communications. He is excited to bring his experience to the job and learn more about the cable and installation part of the business. He is also looking forward to helping people get connected to an internet product they can utilize and enjoy.

Noah currently lives in Dalton City and recently became engaged to Saige Overton from Mattoon. A former Shelbyville High School football standout, he still enjoys watching football, being outdoors, participating in lake activities, and spending time with his Rottweiler, Beevo.



Noah Trimble

Welcome to the PWR-net team, Noah!



Did you know you can pay your Shelby Energy Company bill online and do so much more? Visit our website, shelbyenergyco.coop, to get started today. Just click on the Customer Account login tab. If you have questions or need help, give us a call at 217-774-2311.

SHELBY News

**P.O. BOX 560
Shelbyville, IL 62565**

**Phone: 217-774-3986
or 1-800-677-2612**

**Pay-by-Phone:
1-844-963-2859**

www.shelbyelectric.coop

X @YourCoop

f @YourCoop


@yourcoop_sec

**Summer Office Hours
Monday - Thursday
6:30 a.m. - 4:30 p.m.**

Effective June 9-August 8



**Shelby Electric
Cooperative**

Your Touchstone Energy® Cooperative 

WHEN SECONDS COUNT



Shelby Electric Cooperative has teamed up with Air Evac Lifeteam to offer air ambulance service memberships to rural residents. Air Evac members who use the Air Evac Lifeteam service for critical emergencies will not receive a bill for the flight no matter how many times a year they use it.

Cooperative members can have the \$5 monthly membership charge added to their electric bill. To learn more or download an application, simply scan the QR code or call the office at 217-774-3986 or 800-677-2612.



**Scan to
learn more**





Safety tips for before, during, and after the storm

Storm season is in full swing. Many summer storms have the potential to produce tornadoes, and they can happen anytime, anywhere, and can have winds in excess of 200 mph.

If you are a fan of the weather channel on most cable outlets, this is the time of year you can see the various tornadoes that are reported. While they fascinate many who like to watch them, they are a very dangerous component to summer storms.

As adults, we understand the importance of storm safety, but younger children and teens may not realize the dangers that storms can pose. That is why it's so important to talk to your family and have a storm plan in place. Here are several tips you can share with your loved ones.

Before the storm

- 🌀 Talk to your family about what to do in the event of a severe storm or tornado. Point out the safest location to take shelter, like a small, interior, windowless room on the lowest level of your home. Discuss the dangers of severe thunderstorms, and explain that lightning can strike 10 miles outside of a storm. Remember: When you hear thunder roar, head indoors.
- 🌀 Make a storm kit. It does not have to be elaborate. Having a few items on hand is better than nothing at all. Try to include items like water, nonperishable foods, a manual can opener, a First-Aid kit, flashlights and extra batteries, prescriptions, baby supplies and pet supplies. Keep all the items in one place for easy access if the power goes out.

During the storm

- 🌀 Pay attention to local weather alerts, either on the TV, your smartphone, or weather radio, and understand

the types of alerts. A thunderstorm or tornado watch means these events are possible and you should be prepared; a warning means a thunderstorm or tornado has been spotted in your area and it is time to take action.

- 🌀 If you find yourself in the path of a tornado, head to your safe place to shelter, and protect yourself by covering your head with your arms or materials like blankets and pillows.
- 🌀 If you are driving during a severe storm or tornado, do not try to outrun it. Pull over and cover your body with a coat or blanket if possible.

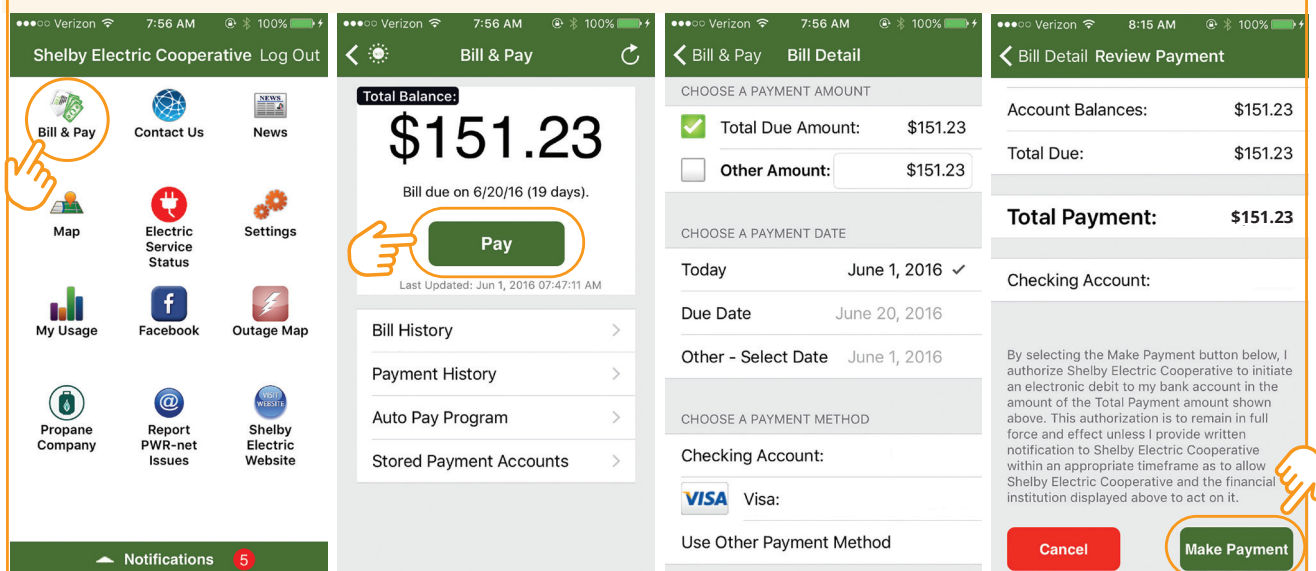
After the storm

- 🌀 If the power is out, conserve your phone battery as much as possible, limiting calls and texts to let others know you are safe or for emergencies only.
- 🌀 Stay off the roads if trees, power lines, or utility poles are down. Lines and equipment could still be energized, posing life-threatening risks to anyone who gets too close.
- 🌀 Wear appropriate gear if you are cleaning up storm debris on your property. Thick-soled shoes, long pants, and work gloves will help protect you from sharp or dangerous debris left behind.

Summer is a time for many fun-filled activities, but the season can also bring severe, dangerous weather. Talk to your loved ones about storm safety so that everyone is prepared and knows exactly what to do when a storm strikes.

Schedule a payment with the SmartHub App

You may already know all the great tools the SmartHub app provides, but did you know you can also schedule a payment using SmartHub? It is easy! All you have to do is open the SmartHub app, select **"Bill & Pay"** then select **"Pay."** Next, you will have the option to pay the full amount or select another amount you want to pay. Then choose when you want the payment to be made. Finally, choose a payment method and select **"Make Payment."** After reviewing your payment, if you made a mistake, just hit the **"Cancel"** button and start again. Once completed, you will receive a notification that your payment was scheduled. You will receive an additional notification when your payment has been processed. If you do not have the SmartHub app, download it today!



If you pay online, you can also schedule a payment. After logging in, if you choose to pay the full amount, select the **"Pay Now"** button at the top. Then choose when you want to schedule your payment and the payment method. To make a partial payment select the tab **"Billing & Payments,"** enter the amount you wish to pay and follow the easy steps. A notification will be sent when a payment is scheduled and when a payment has been received. A link to SmartHub is on the cooperative's homepage, shelbyelectric.coop.



Shelby Electric Cooperative
Your Touchstone Energy® Cooperative

Reporting Outages

Ways to report outages:

- ✓ Call 1-800-677-2612
- ✓ Report on the SmartHub App
- ✓ Report online with SmartHub

✗ Please do not report outages via email or through social media (i.e. Facebook or X). We do not monitor these 24/7.

Summer Office Hours

Monday - Thursday
6:30 a.m. - 4:30 p.m.
Closed Fridays

Summer office hours will be in effect June 9 - August 8

Call 217-774-3986 to report an outage - 24/7